

# MILAN LINATE

<b>Category</b>	Upscale 4 star hotel
<b>Gross surface</b>	4,956 sqm
<b>Opening year</b>	1978

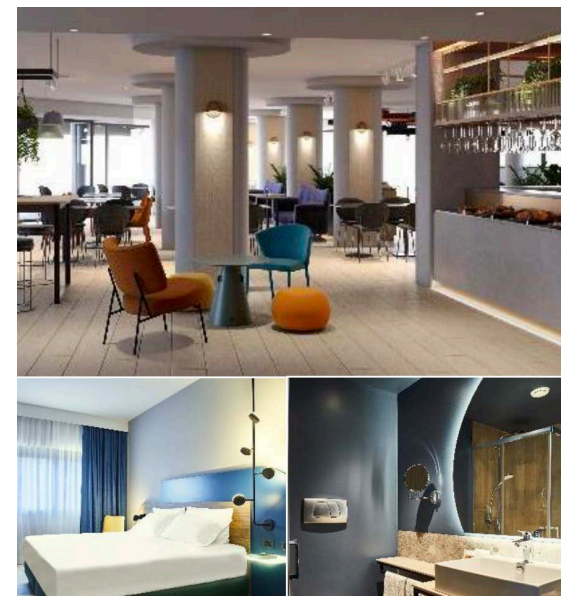
## Facilities

- 142 double rooms, of which 74 fully refurbished in 2022.
- Functional lobby with Grab-n-Go corner
- Restaurant and bar with covered dehors with show-cooking grill. 90 covers indoor and 100 outdoor.
- 120 sqm of meeting space (next page for details)
- Fitness room
- Outdoor swimming pool with bar service (seasonal) – available from summer 2023
- Extensive outdoor parking

## Competitive advantages

- Renovated product with strong identity
- Full service with strong F&B offering
- Leisure facilities with large green areas

Room inventory	Classic (refreshed)	Superior (renovated)	Total
Double /twin	67	74	142
<b>Total rooms</b>	<b>68</b>	<b>74</b>	<b>142</b>
- of which connecting rooms	4	24	28



Renovated to accentuate its urban resort features and maximise its corporate and leisure appeal

**Linate Airport and M4 line:** 6 km car and 1 km by shuttle (dedicated access from behind the terminal)

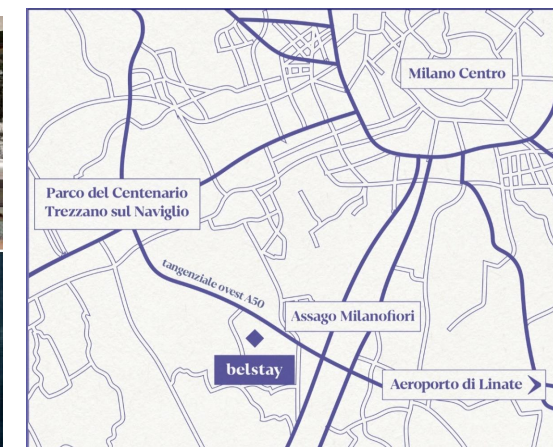
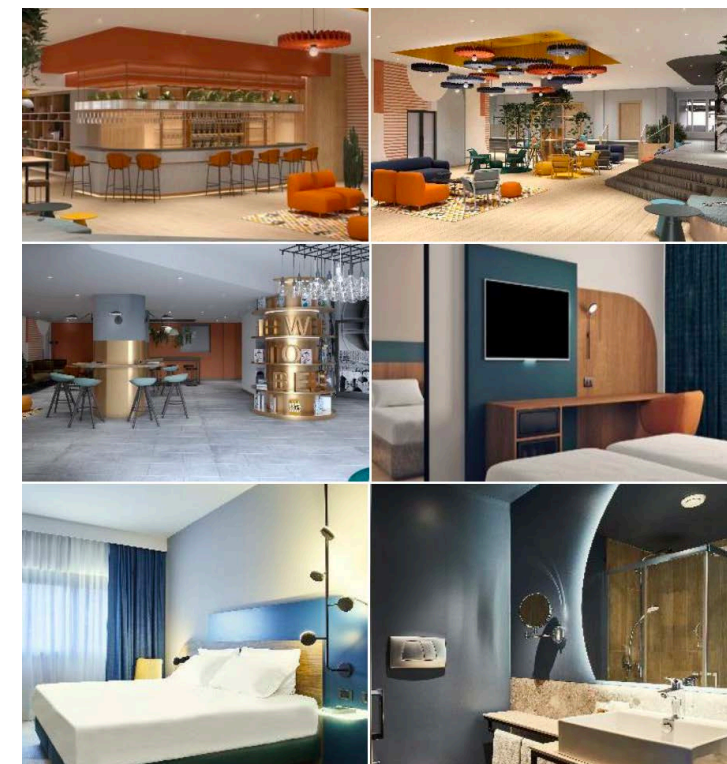
**Milan city center:** 13 km

**Milano Fair:** 17 km

# MILAN ASSAGO

<b>Category</b>	Upscale 4 star hotel
<b>Gross surface</b>	13,333 sqm
<b>Opening year</b>	1992
<b>Facilities</b>	<ul style="list-style-type: none"> <li>• 203 rooms of which 92 fully refurbished and 9 junior suites</li> <li>• Large lobby with bar, lounge and Grab-n-Go corner</li> <li>• Restaurant with show-cooking grill and dedicated access for a total of 230 covers indoor</li> <li>• 950 sqm of meeting space (next two pages for details)</li> <li>• Fitness room</li> <li>• Outdoor swimming pool with bar service (seasonal)</li> <li>• Extensive outdoor parking</li> </ul>
<b>Competitive advantages</b>	<ul style="list-style-type: none"> <li>- Renovated product with strong identity</li> <li>- Large flexible common areas and extensive meeting spaces, including a full floor dedicate to co-working</li> <li>- Leisure facilities including external pool</li> </ul>

Room inventory	Classic (refreshed)	Superior (renovated)	Total
Double / twin	106	88	194
Junior suites	5	4	9
<b>Total rooms</b>	<b>111</b>	<b>92</b>	<b>203</b>
- of which with third bed	43	36	79
- of which connecting rooms	-	16	16



Create a hotel of great value with a very compelling business centre capacity along Milan's second ring road

**Milanofiori Forum:** 4,5 km by shuttle, about 8 minutes

**Milan city center:** 13 km

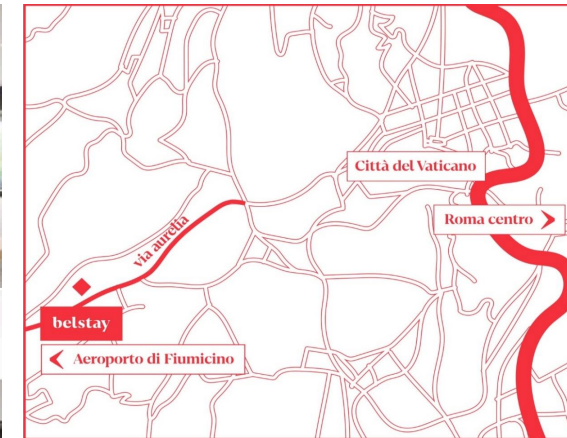
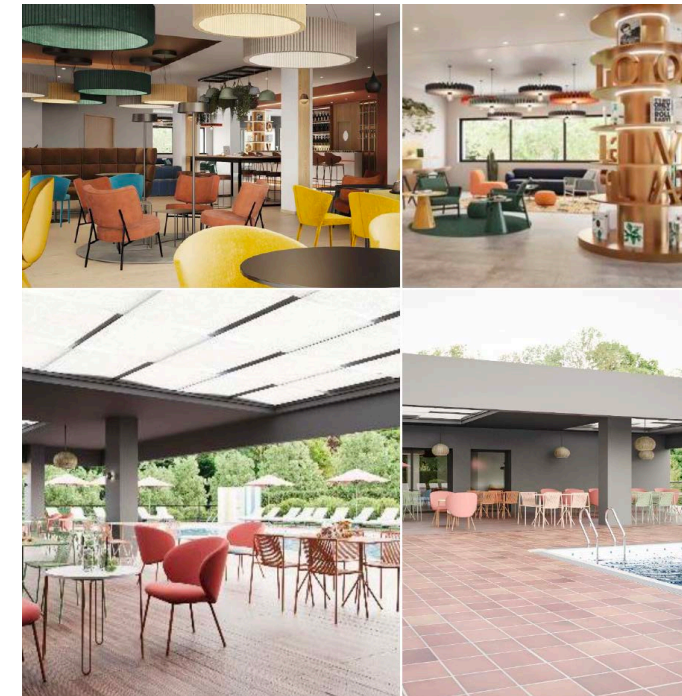
**Linate Airport:** 21 km

**Trezzano sul Naviglio:** 9 km

# ROME AURELIA

<b>Category</b>	Upscale 4 star hotel
<b>Gross surface</b>	11,869 sqm
<b>Opening year</b>	1956
<b>Facilities</b>	<ul style="list-style-type: none"> <li>• 246 rooms of which 115 fully refurbished and 7 junior suites</li> <li>• Large lobby with foyer and exposition area, lounge bar and Grab-n-Go corner</li> <li>• Restaurant with show-cooking grill for individuals, area dedicated to groups and events and pool facing dehors. 160 covers indoor and 75 outdoor.</li> <li>• 526 sqm of meeting space (next two pages for details)</li> <li>• Fitness room</li> <li>• Outdoor swimming pool with bar service (seasonal)</li> <li>• Extensive outdoor parking.</li> </ul>
<b>Competitive advantages</b>	<ul style="list-style-type: none"> <li>- Renovated product with strong identity</li> <li>- Large congress areas with flexible exhibition space</li> <li>- Urban resort ambience with outdoor patio and external pool</li> </ul>

Room inventory	Classic (refreshed)	Superior (renovated)	Total
Single	6	3	9
Double / twin	121	109	230
Junior suites	4	3	7
<b>Total rooms</b>	<b>131</b>	<b>115</b>	<b>246</b>
- of which connecting rooms	4	16	20



Refurbished and positioned to lead in MICE and events and become a distinguished urban resort in Rome Aurelia

**Metro Line A:** 3 km by shuttle, 7 stops from Piazza di Spagna.

**Vatican:** 6 km

**EUR district:** 9 km

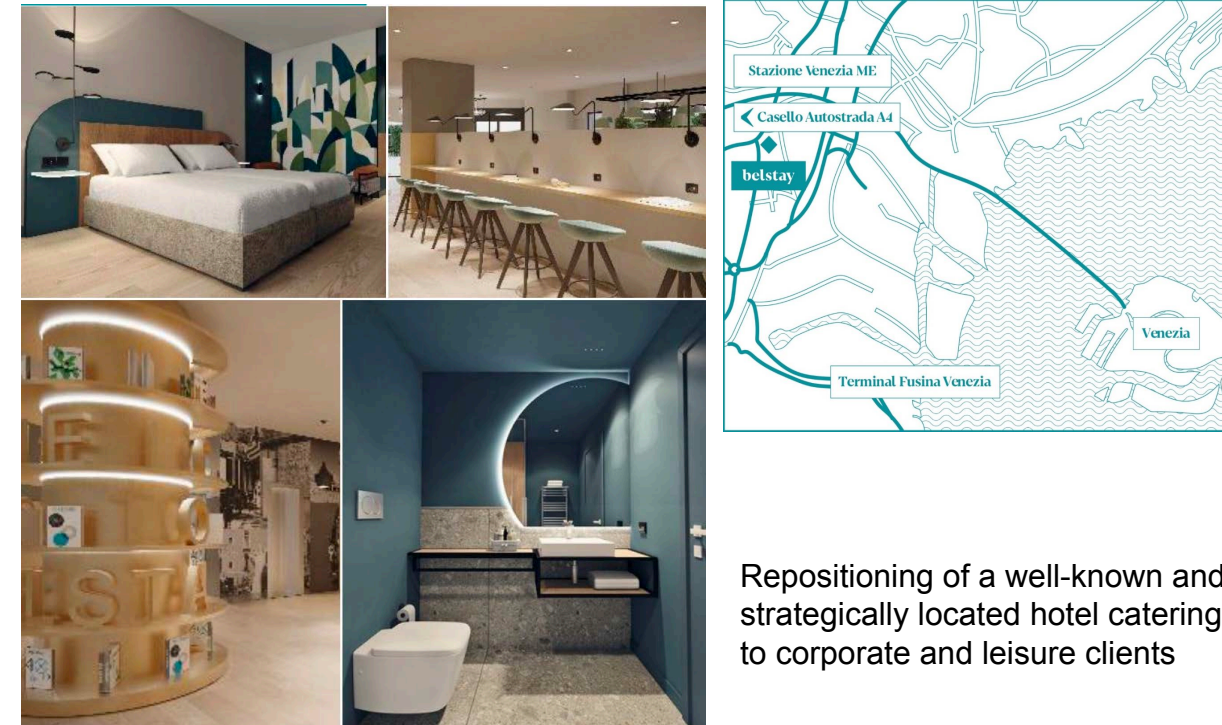
**Rome city centre:** 10 km

**Fiumicino Airport:** 25 km

# VENICE MESTRE

<b>Category</b>	Upscale 4 star hotel
<b>Gross surface</b>	9,395 sqm
<b>Opening year</b>	1981
<b>Facilities</b>	<ul style="list-style-type: none"> <li>• 188 rooms of which 94 fully refurbished</li> <li>• Large lobby with lounge bar, dehors and Grab-n-Go corner</li> <li>• Restaurant with show-cooking grill for individuals, area dedicated to groups for a total of 190 covers indoor</li> <li>• 380 sqm of meeting space (next page for details)</li> <li>• Fitness room</li> <li>• Outdoor swimming pool with bar service (seasonal)</li> <li>• Extensive outdoor parking</li> </ul>
<b>Competitive advantages</b>	<ul style="list-style-type: none"> <li>- Renovated product with strong identity</li> <li>- Strategically located at the entrance of Mestre (from Milan)</li> <li>- Flexible product to cater to corporate, MICE and leisure groups</li> </ul>

Room inventory	Classic (refreshed)	Superior (renovated)	Total
Single	2	2	4
Double/twin	92	92	184
<b>Total rooms</b>	<b>94</b>	<b>94</b>	<b>188</b>
- of which connecting rooms	20	12	32



Repositioning of a well-known and strategically located hotel catering to corporate and leisure clients

Mestre train station: 3 km  
A4 highway: 12 km  
Venice Laguna: 10 km  
Venice Airport: 13 km